

**CSFD-06W-104**

- quick mounting
- shock-resistant housing
- compact design

 made
 in
 Germany



EN 54-24:2008
Ref. Nr.: 001-13
ID-Code: SAA-LS01
1438-CPR-XXXX

AUDEMO-SYSTEMS GmbH
Schatzbogen 62 81829 München,
Germany
CE-Symbol gemäß Richtlinie 93/68EWG

The 6W powered speaker is equipped with a 77mm full-range loudspeaker and a 100V transformer with 3 power adjustments. The powder coated metal in RAL 9016 guarantees long-term stability. For additional reliability, a thermal fuse is provided and the speaker is impregnated against wetness. The speaker is also secured with protection class IP 21C against the security risks of environmental influences. Quick and easy mounting with spring clamps and short tension distance. The connecting cables can be supplied by 4-pin screw terminal at the rear of the firedome.

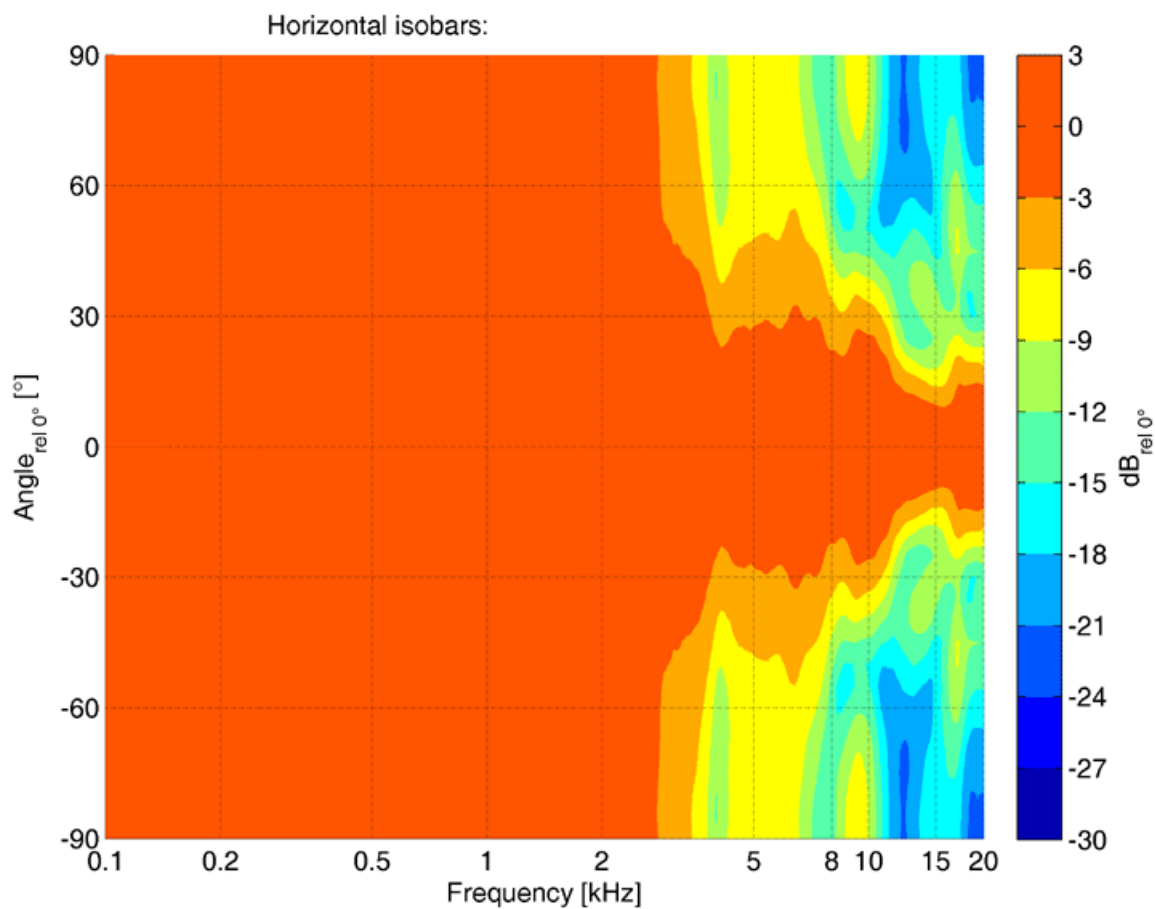
Special paint of the speaker in 4-digit RAL- or NCS-colour available at extra cost.

The firedome is included in the delivery.

This speaker is suitable for a ceiling strength of about 2 – 45 mm. Our specification is primarily related to solid ceilings, for ceilings with soft materials a higher ceiling thicknesses could be necessary. In addition, stronger cables and other fittings may also result in changes of the appropriate setup. With regard to the variety of materials and manufacturers, we recommend to build in a sample of the speaker to match the requirements accurately

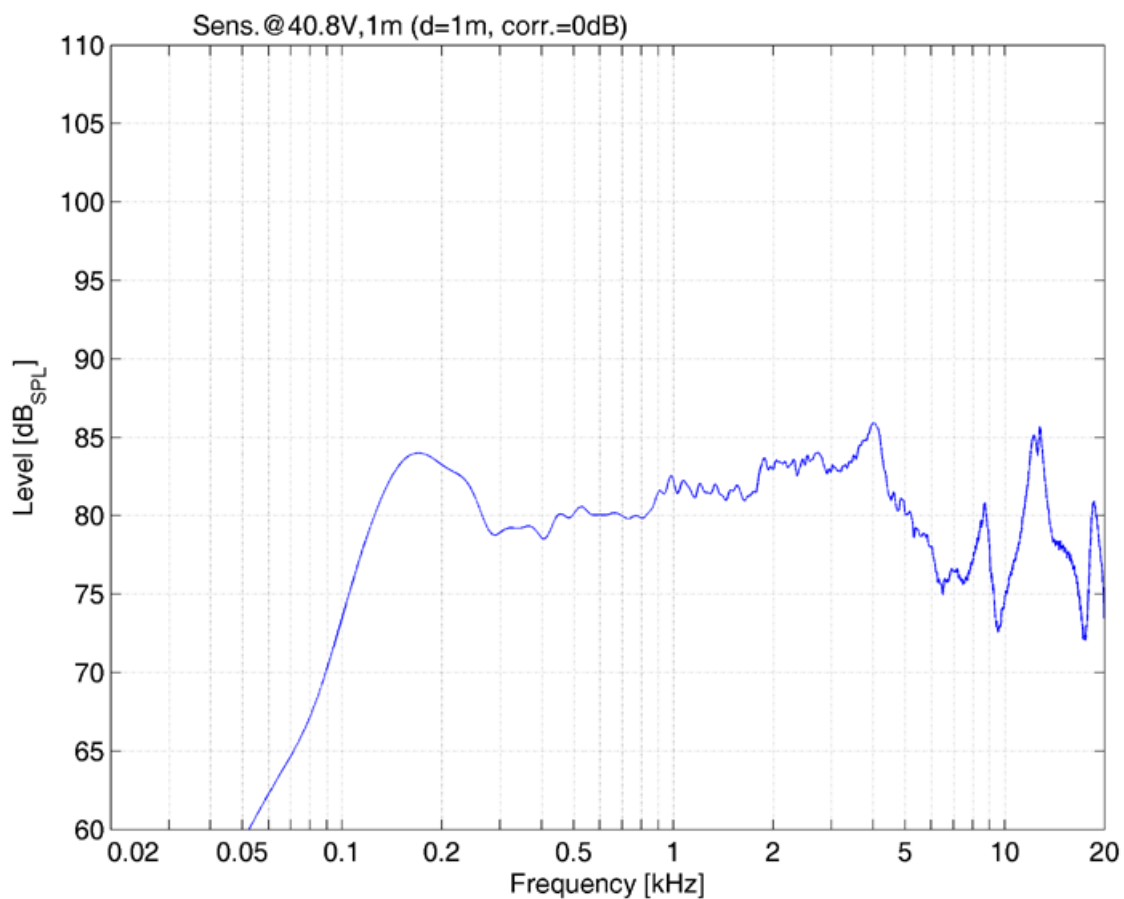


Polar Diagrams



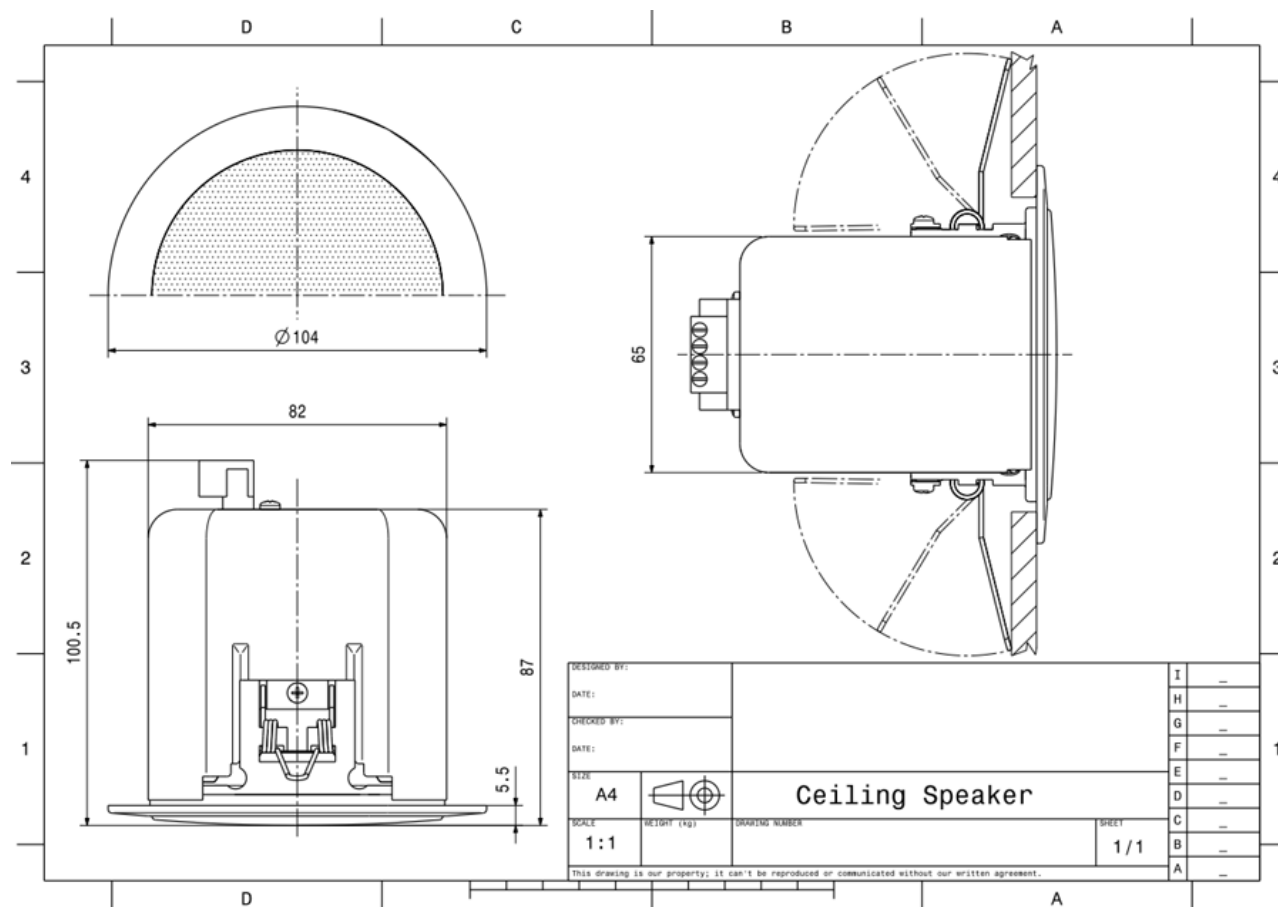


Frequency Response Diagrams





Technical Diagrams





Technical Data (Electrical)

Description	CSFD-06W-104
Power	6/3/1,5 W
Impedance (100V)	1667/3333/6667 ohm
Frequency Range	98 - 20.000 Hz
Frequency Response	93 - 20.100 Hz
SPL 1W/1m, peak	84,6 dB
SPL , 1W/4m, peak	72,6 dB
SPL Pmax/4m, peak	80,3 dB
SPL, rated noise power / 4m	79,0 dB
Sensitivity EN54-24, 1W/4m	68,4 dB
Sensitivity EN54-24, 1W/1m	80,4 dB
Dispersion -6dB, 500Hz	h/v 180°
Dispersion -6dB, 1KHz	h/v 180°
Dispersion -6dB, 2KHz	h/v 180°
Dispersion -6dB, 4KHz	h/v 81°

Please note: Because of many different types of ceiling materials and ceiling strengths we recommend to build in a sample of the speaker to match the requirements accurately.

Technical Data (Mechanical)

Dimensions	104x100,5 mm
IP Rating	IP21
Weight (net)	0,64 kg
Ceiling Cut-out	86 mm
Temperature range	-10 / +55 C°
Mounting	Quick fit mounting
Connector	4-pin screw terminal
Maximum cable cross section	4,9mm ²
Max. cable cross section loop	2x1,2mm ²
Colour	RAL 9016

All rights reserved.

Information contained in this document is believed to be accurate, however no representation or warranty is given and Audemo-systems in Germany assumes no liability with respect to the accuracy of such information.